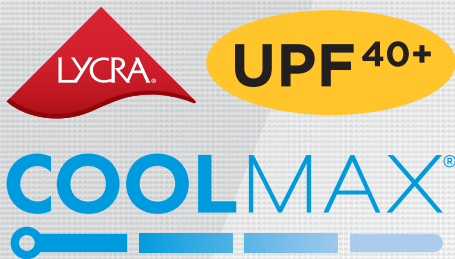


2 0 2 1 C A T A L O G



# maevn



Versatile  
&  
*Comfortable*



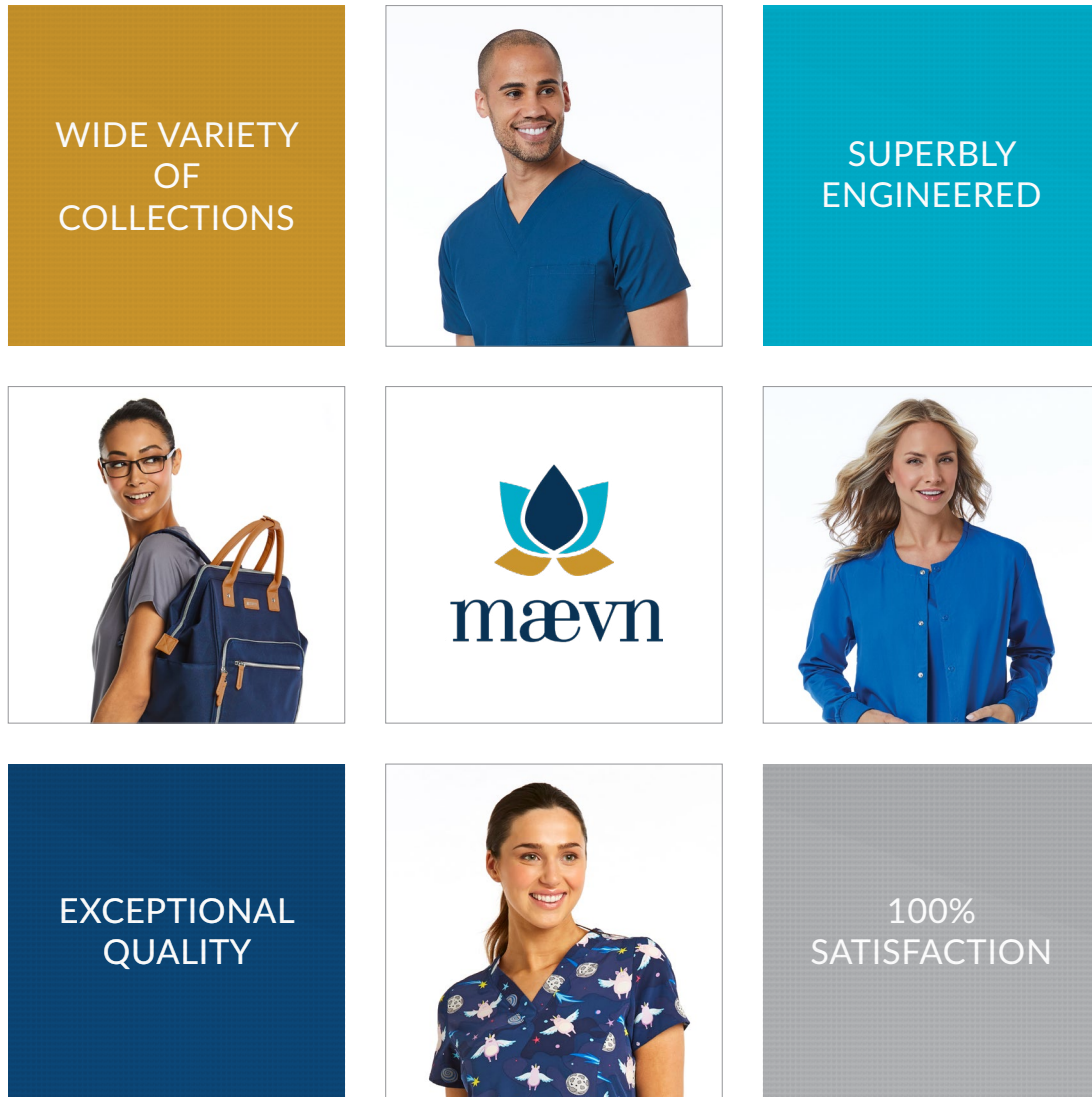
**HIGH**

Performance  
Durability  
Comfort Stretch

TOP  
EON SPORT: 1778-RYL

BOTTOM  
EON SPORT: 7378-RYL

From superior design to world-class development,  
we provide the highest standards to all our customers.



## OUR MISSION

We strive to be your number one supplier of medical uniforms. We are committed to delivering a superb product through exceptional quality, unquestionable reliability, and outstanding customer service while maintaining competitive pricing.



# CONTENTS

---

## Top-Selling Collections

Matrix	4
Matrix Impulse	11
Matrix Pro	15
EON Sport	17
EON	20
Bestee/Knits	26/27

---

## Collections

Pure Soft	28
Primaflex	30
Blossom	32
Red Panda	34
Core	40
Blaze	43
Smart	44
Lab Coats	45
Prints	48

---

<b>Accessories</b>	<b>54</b>
--------------------	-----------

---

<b>Group Sales</b>	<b>60</b>
--------------------	-----------

---

<b>Color Guide</b>	<b>67</b>
--------------------	-----------

---

<b>Sizing Guide</b>	<b>74</b>
---------------------	-----------

---

<b>Placing an Order</b>	<b>75</b>
-------------------------	-----------

---

<b>Customer Service</b>	<b>75</b>
-------------------------	-----------

---

TOP  
BESTEE: 6909-CRB  
MATRIX IMPULSE: 4520-BLK

BOTTOM  
MATRIX IMPULSE: 8510-BLK

TOP SELLER

65% Polyester 32% Rayon  
3% Spandex

MATRIX

**C** High Comfort Stretch

Our new Matrix collection offers everything you are looking for!  
Perfectly designed to fit your function and style.

- Super soft fabric
- Durable stretch
- Professional style and fit

Function  
with  
*Confidence*



TOP  
MATRIX: 3701-PEW

BOTTOM  
MATRIX: 6501-PEW



## 3501 DOUBLE V-NECK TOP

Reg: XXS - XL Length (M): 27.25"  
 Plus: 2XL - 3XL Length (M): 27.25"  
 Short: XS - XL Length (M): 25.75"

Front and back v-neck top. Two front slant patch pockets. Utility tape in the left pocket. Single welt pocket. Dyed-to-match utility loop on the left shoulder seam. Front and back vertical seams. Side vents.



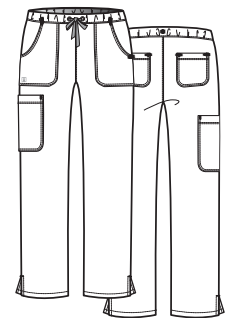
CBL RYL GBL NVY TEL CRB OLV EGP WIN RED HPK MNT WMN PEW BLK ARB FSM DHA WHT  
 NEW NEW NEW 3501 ONLY



## 6501 FULL ELASTIC WAIST CARGO PANT

Reg: XXS - XL (31")  
 Plus: 2XL - 3XL (31")  
 Petite: XS - 2XL (28.5")  
 Tall: SM - XL (33.5")

Tapered pant with full elastic waistband. Dyed-to-match grommets and drawstring. Two front curved patch pockets. Single patch cargo pocket on the right side and two back patch pockets. Side vents.



65% Polyester 32% Rayon 3% Spandex High Comfort Stretch

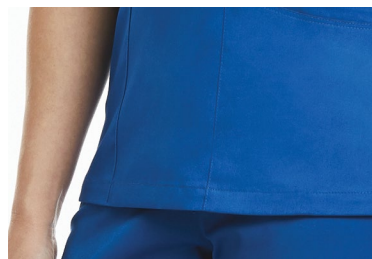
MATRIX

## 3701 CURVED MOCK WRAP TOP

Reg: XXS - XL

Plus: 2XL - 3XL Length (M): 27.75"

Curved mock wrap top. Two front slant patch pockets. Contrast utility tape in the left pocket. Utility pocket on the right side. Dyed-to-match side knit panel. Dyed-to-match utility loop on the left shoulder seam. Front and back princess seams. Side vents.



## 6701 FULL ELASTIC WAISTBAND SEMI-JOGGER PANT

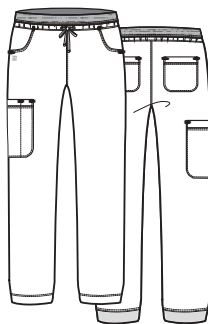
Reg: XXS - XL (30")

Plus: 2XL - 3XL (30")

Petite: XS - 2XL (27.5")

Tall: SM - XL (32.5")

Full elastic waistband. Dyed-to-match drawstring with grommets. Semi-jogger pant with stylized half elastic ankle band. Side cargo patch pocket. Two back patch pockets.



**3502 HEATHERED DOUBLE V-NECK TOP**

Reg: XXS - XL

Plus: 2XL - 3XL

Length (M): 27.25"



Front and back v-neck top with heathered neckband.  
Single heathered trim welt pocket. Two slant patch pockets. Utility tape in the left pocket.

Dyed-to-match utility loop on the left shoulder seam.

Front and back vertical seams. Side vents.



CBL

RYL

GBL

NVY

TEL

CRB

OLV

EGP

WIN

RED

HPK

WMN

PEW

BLK

ARB

FSM

DHA

= Contrast Color

NEW NEW NEW

**7701 LONG SLEEVE ROUND NECK SNAP JACKET**

Reg: XS - XL

Plus: 2XL - 3XL

Length (M): 27.75"

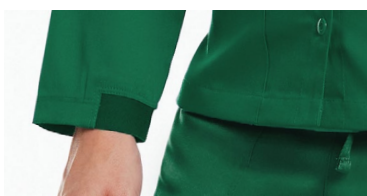
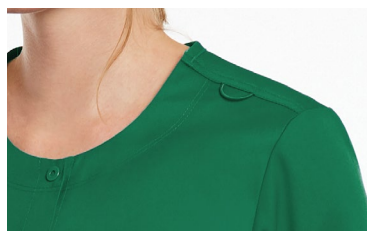


Long sleeve round neck snap button jacket.

Two front patch pockets. Utility tape in the left pocket. Welted utility pocket.

Dyed-to-match half elastic at lower sleeve hem.

Utility loop on the left shoulder seam. Side vents.



CBL

RYL

NVY

TEL

HTR

WIN

PEW

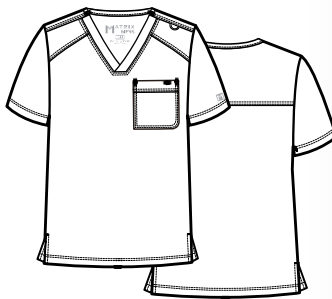
BLK

WHT

**5501 MEN'S BASIC V-NECK TOP**

Reg: XS - XL

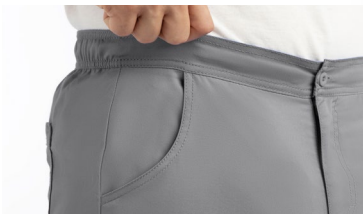
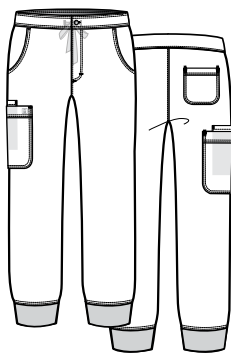
Plus: 2XL - 3XL Length (M): 29.25"

*Men's v-neck top.**Single chest pocket with a pen slot.**Dyed-to-match utility loop on the left shoulder seam.**Side vents. Back yoke.***8501 MEN'S HALF ELASTIC WAISTBAND JOGGER PANT**

Reg: XS - XL (29")

Plus: 2XL - 3XL (29")

Short: XS - 2XL (26.5")

*Men's half elastic waistband pant with knitted ankle cuff.**Dyed-to-match inner drawstring.**Two front curved pockets. Single patch cargo pocket with inner utility pocket. Single back patch pocket on the right side.*



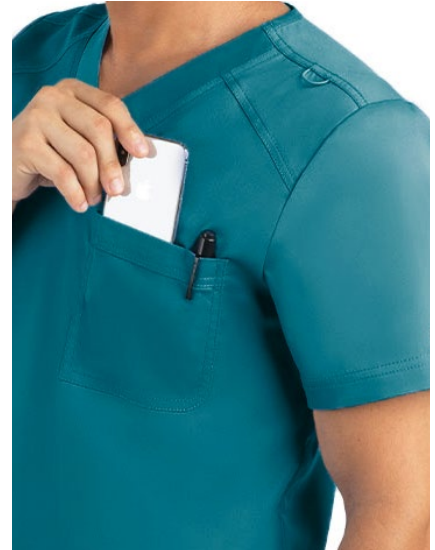
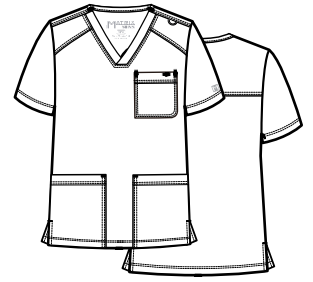
## 5502 MEN'S 3-POCKET V-NECK TOP

Reg: XS - XL

Plus: 2XL - 3XL

Length (M): 29.75"

Men's v-neck top. Single chest pocket with a pen slot. Two front patch pockets. Dyed-to-match utility loop on the left shoulder seam. Side vents. Back yoke.



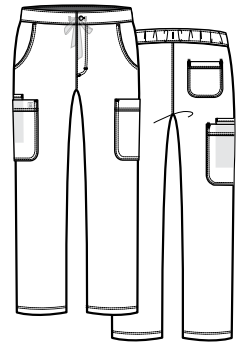
## 8502 MEN'S HALF ELASTIC WAISTBAND CARGO PANT

Reg: XXS - XL (31")

Plus: 2XL - 3XL (31")

Short: XS - 2XL (28.5")

Men's half elastic waistband pant with tapered leg. Dyed-to-match inner drawstring. Two front curved pockets. Two cargo patch pockets. Single inner utility pocket on the right leg. Single back patch pocket.



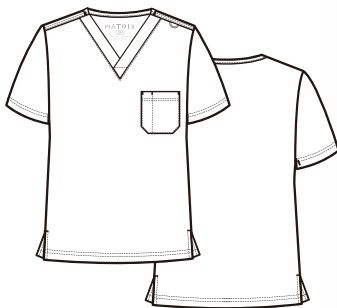
65% Polyester 32% Rayon 3% Spandex High Comfort Stretch

MATRIX

**3500 UNISEX V-NECK TOP**

Reg: XS - XL

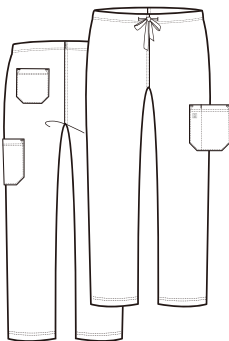
Plus: 2XL - 5XL Length (M): 28.75"

*V-neck top.**Single chest pocket with a pen slot.**Utility loop on the left shoulder seam.**Side vents.***6500 UNISEX BASIC PANT**

Reg: XS - XL (31")

Plus: 2XL - 5XL (31")

Short: XS - 2XL (28.5")

*Slightly tapered pant leg.**Single cargo patch pocket with a pen slot.**Dyed-to-match drawstring with tied waist.**Single back patch pocket.*

**TOP SELLER**

**92% Polyester 8% Spandex**

**MATRIX**  
*IMPULSE*

Our new Matrix collection offers everything you are looking for!  
Perfectly designed to fit your function and style.

- Super soft fabric
- Durable stretch
- Professional style and fit

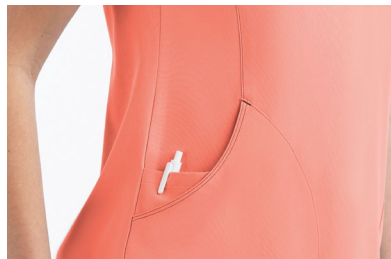
**C High Comfort Stretch**

**4510 CONTRAST CURVED V-NECK TOP**

Reg: XS - XL

Plus: 2XL - 3XL Length (M): 27.75"

Women's v-neck top with contrast/dyed-to-match neckband and decorative contrast stitching. Two curved patch pockets at side seam. Single inner utility pocket. Side vents.



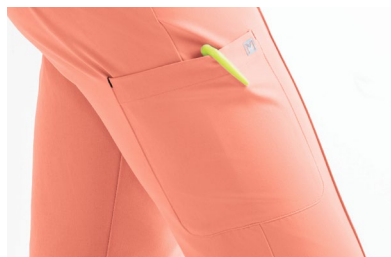
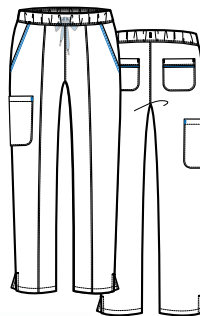
**8510 FULL ELASTIC WAISTBAND PANT**

Reg: XS - XL (30.5")

Plus: 2XL - 3XL (30.5")

Petite: XS - 2XL (28")

Women's full elastic waistband pant with tapered leg. Dyed-to-match inner drawstring. Two front slant pockets. Single cargo patch pocket. Two back patch pockets with contrast piping. Side vents.

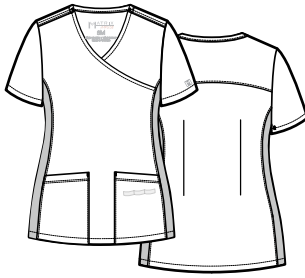


## 4520 CONTRAST KNIT PANEL MOCK WRAP TOP

Reg: XS - XL

Plus: 2XL - 3XL Length (M): 27.25"

Women's mock wrap top. Contrast/dyed-to-match knit side panel. Two front patch pockets. Utility tape in the left pocket.



## 8520 KNIT YOGA WAISTBAND JOGGER PANT

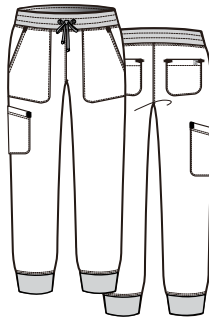
Reg: XS - XL (28.5")

Plus: 2XL - 3XL (28.5")

Petite: XS - 2XL (26")

Tall: XS - 2XL (31")

Women's knitted yoga waistband pant. Jogger style leg with knit fabric. Contrast drawstring with grommets. Two front slant patch pockets. Single slant cargo pocket. Two back patch pockets.





## 4511 WOMEN'S CURVED V-NECK TOP

Reg: XS - XL

Plus: 2XL - 3XL Length (M): 27.25"

*Women's v-neck top.*

*Two front curved patch pockets at side seam.*

*Single inner utility pocket. Front princess seams and back darts. Side vents.*



92% Polyester 8% Spandex



High Comfort Stretch

## 4521 WOMEN'S KNIT PANEL MOCK WRAP TOP

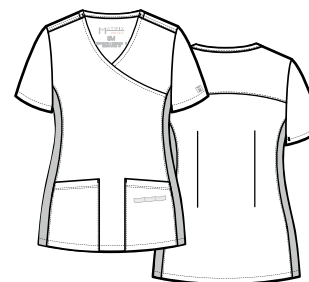
Reg: XS - XL

Plus: 2XL - 3XL Length (M): 27.25"

*Women's mock wrap top.*

*Dyed-to-match knit side panel for added extra flexibility. Two front patch pockets.*

*Utility tape in the left pocket. Back yoke and darts for added shape and style.*



MATRIX IMPULSE

**4530 WOMEN'S TUCK-IN TOP**

Reg: XS - XL

Plus: 2XL - 3XL Length (M): 25.75"

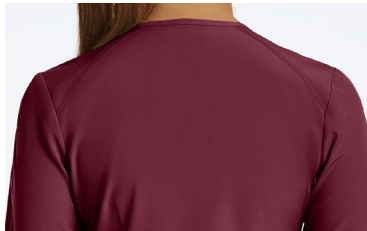
Women's curved v-neck top with curved hemline.  
Single welt pocket at the chest.  
Back shoulder seams and darts for added shape and style. Side vents.

**7510 WOMEN'S ROUND NECK SNAP JACKET**

Reg: XS - XL

Plus: 2XL - 3XL Length (M): 27.75"

Women's snap button jacket. Long sleeve with full ribbed cuff. Two front patch pockets. Single inner utility pocket on the right side. Utility tape in the left pocket. Front princess seams and back shoulder seams with darts for added style and shape. Side vents.



**TOP SELLER**

**PRO**  
**MATRIX**

**P High Performance**

**74% Polyester 20% Rayon  
6% Spandex**

Matrix got even better. Welcome Matrix Pro!

- Soft and smooth heather fabric
- Durable and stretchy
- Professional style and fit

### 3901 CONTRAST LAYERED V-NECK TOP

Reg: XXS - XL

Plus: 2XL - 3XL Length (M): 27.25"

Heather fabric v-neck top with layered contrast fabric neckband. Two front patch pockets. Utility tape in the left pocket. Single contrast welt pocket. Utility loop on the left shoulder seam. Decorative detail at side seam. Side vents.



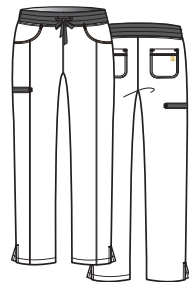
HGR HNV

### 6901 CONTRAST YOGA WAISTBAND PANT

Reg: XXS - XL (31") Petite: XS - 2XL (28.5")

Plus: 2XL - 3XL (31") Tall: S - XL (33.5")

Full contrast heather fabric yoga style waistband pant with tapered leg. Side vents. Dyed-to-match drawstring with grommets. Two front curved pockets. Single contrast welt cargo pocket. Two back patch pockets.

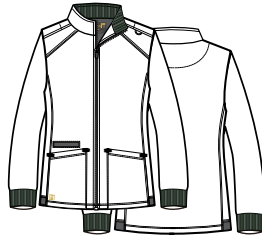


**7091 COMFY WARM-UP JACKET**

Reg: XS - XL

Plus: 2XL - 3XL Length (M): 27.25"

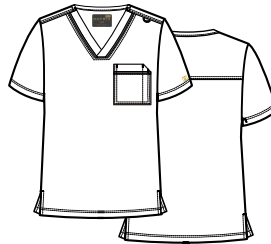
Long sleeve jacket with contrast inner knit rib collar. Two slant patch pockets with contrast welt utility pocket. Contrast knit rib band at sleeve cuff. Contrast elastic at side panel hem. Utility loop on the left shoulder seam.

**5901 MEN'S CONTRAST PIPING V-NECK TOP**

Reg: XS - XL

Plus: 2XL - 3XL Length (M): 29.25"

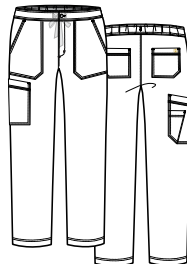
Men's v-neck top. One chest pocket with a pen slot. Dyed-to-match utility loop on the left shoulder seam. Decorative contrast detail at front neckband and chest pocket. Side vents.

**8901 MEN'S HALF ELASTIC WAISTBAND CARGO PANT**

Reg: XS - XL (31") Short: XS - 2XL (28.5")

Plus: 2XL - 3XL (31")

Men's half elastic waistband cargo pant with tapered leg. Dyed-to-match drawstring. Two front angled patch pockets. Two back patch pockets. Single angled patch cargo pocket with scissor pocket.



TOP SELLER

EON  
SPORT

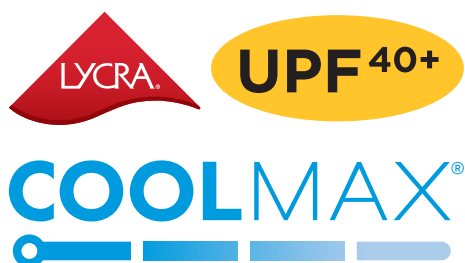
P High Performance

59% Polyester 22% Rayon  
19% Elastell-P

Look and feel great — all day long!

- Stay dry all day with COOLMAX® breathable fabric technology
- Moisture-wicking fibers to help reduce bacterial growth
- Temperature control
- Soft and flexible
- Shape retention

with



Maximum Mobility  
While You  
*Stay Dry*

TOP  
EON SPORT: 1778-IFB

BOTTOM  
EON SPORT: 7378-IFB

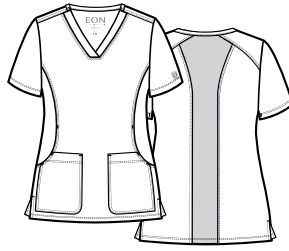


**1768 SPORTY & COMFY MULTI POCKET V-NECK TOP**

Reg: XS - 1XL

Plus: 2XL - 3XL Length (M): 27.25"

Women's v-neck top. Two side pockets and two front pockets. Back shoulder panel for added style and shape. Dyed-to-match center back knit panel for added elastic and comfort. Silicone silver logo patch on the left sleeve. Side vents.

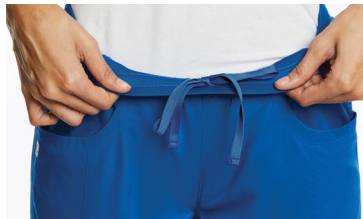
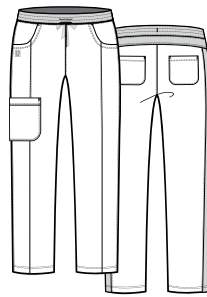
**7368 SPORTY & COMFY FULL ELASTIC WAISTBAND PANT**

Reg: XS - 1XL (Inseam: 30.5")

Plus: 2XL - 3XL (Inseam: 30.5")

Petite: XS - 2XL (Inseam: 28")

Women's full elastic yoga style waistband pant. Dyed-to-match inner drawstring. Two front curved pockets. Microspan waistband. Single cargo patch pocket and two back patch pockets. Dyed-to-match side knit panel and back yoke for added elastic and comfort. Silicone silver logo patch on the right curved pocket. Side vents.



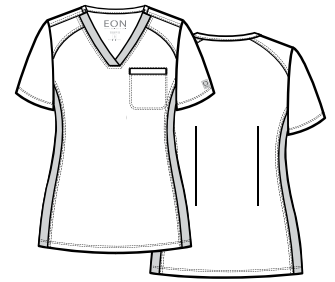


## 1778 SPORTY CHEST POCKET V-NECK TOP

Reg: XS - 1XL

Plus: 2XL - 3XL Length (M): 26.75"

Women's v-neck top with knitted front neckband. Single chest welt pocket. Back shoulder panel for added style and shape. Dyed-to-match side knit panel for added elastic and comfort. Silicone silver logo patch on the left sleeve.



RYL NRV IFB OLV CHR BLK



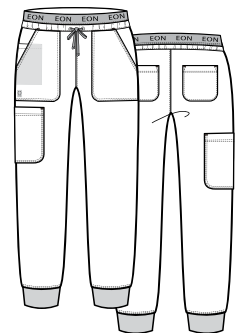
## 7378 SPORTY FULL ELASTIC LOGO WAISTBAND JOGGER PANT

Reg: XS - 1XL (Inseam: 28.5")

Plus: 2XL - 3XL (Inseam: 28.5")

Petite: XS - 2XL (Inseam: 26")

Women's full elastic logo waistband pant. Dyed-to-match shell fabric drawstring. Microspan cuff. Two front patch pockets. Single inner utility pocket. Single cargo patch pocket and two back patch pockets. Jogger style dyed-to-match knit leg hem. Silicone silver logo patch on the bottom of the right side curved pocket.



59% Polyester 22% Rayon

19% Elastell-P

COOLMAX

LCRA

UPF 40+

P High Performance

EON SPORT

**TOP SELLER**

# EON

**P High Performance**  
with

**COOLMAX®**

**LYCRA®**

**UPF 40+**

Fabric Technology from  
The LYCRA Company

**59% Polyester 22% Rayon 19% Elastereil-P**  
**Mesh: 83% Polyester 17% Spandex**

The work of a medical professional never slows down  
— neither should your scrubs!

- Stay dry all day with COOLMAX® breathable fabric technology
- Moisture-wicking fibers to help reduce bacterial growth
- Long-lasting color • Shape retention
- Durable elastic for flexibility

## 1708 V-NECK POCKET TOP

Reg: XXS - XL  
Plus: 2XL - 3XL Length (M): 27.75"

V-neck top. Welt pocket at waist with triangle ring.  
Two front patch pockets. Utility tape in the left  
pocket. Small hidden patch pocket.  
Princess seams and back darts. Side vents.

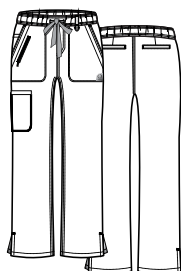


CBL MBL RYL GBL TNY TBL CRB SKY HTR LVR GRP EGP WIN RED SBP KHI PEW CHR BLK WHT

## 7308 FULL ELASTIC ZIPPER POCKET CARGO PANT

Reg: XXS - XL (30.5") Petite: XXS - 3XL (28")  
Plus: 2XL - 3XL (30.5") Tall: XS - 3XL (33")

Full elastic waistband.  
Dyed-to-match drawstring. Belt loop ring.  
Two front slant patch pockets, inner utility pocket,  
zipper pocket, welt cargo pocket.  
Two back welt pockets. Side vents.





## 1718 SPORTY MESH PANEL TOP

Reg: XXS - XL

Plus: 2XL - 3XL Length (M): 27.75"



Curved v-neck top. Mesh side panels. Curved back yoke with mesh panel and detailing inside. Single side pocket with zipper and single side pocket with twill tape. Two front curved pockets.



59% Polyester 22% Rayon 19% Elastell-P  
Mesh: 83% Polyester 17% Spandex

COOLMAX®



P High Performance

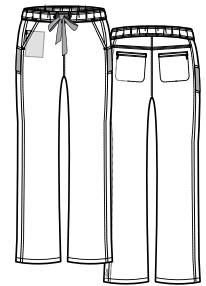
EON



## 7318 SPORTY MESH PANEL PANT

Reg: XXS - XL (30.5") Petite: XXS - 3XL (28")

Plus: 2XL - 3XL (30.5") Tall: XS - 3XL (33")



Straight leg pant with side panels and mesh piecing. Full elastic waistband with grommets and dyed-to-match drawstring. Two front slant pockets. Single inner utility pocket. Two back pockets with zippers.



## 1738 BACK MESH PANEL SHAPED V-NECK TOP

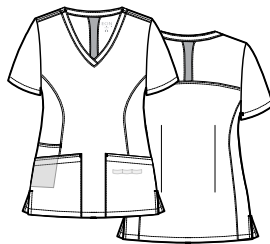
Reg: XXS - XL

Plus: 2XL - 3XL Length (M): 27.75"

Two front patch pockets. Utility tape in the left pocket. Single inner mesh utility pocket.

Back yoke with mesh panel and detailing inside.

Princess seams and back darts. Side vents.



## 7338 7-POCKET YOGA SCRUB PANT

Reg: XXS - XL (30.5") Petite: XXS - 3XL (28")

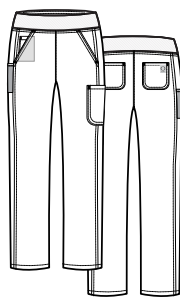
Plus: 2XL - 3XL (30.5") Tall: XS - 3XL (33")

Tapered pants with yoga style waistband.

Two front slant pockets. Single inner utility pocket.

Single mesh pocket with twill tape.

Two back patch pockets. Single cargo pocket.

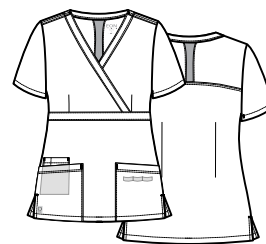


## 1748 BACK MESH PANEL MOCK WRAP TOP

Reg: XXS - XL

Plus: 2XL - 3XL Length (M): 27.75"

V-neck top. Curved back yoke with mesh panel and detailing inside. Two front patch pockets. Utility tape in the left pocket. Single inner utility pocket. Empire waist with front and back darts. Side vents.

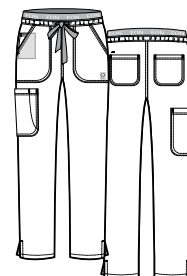


## 7348 7-POCKET WAISTBAND CARGO PANT

Reg: XXS - XL (30.5") Petite: XXS - 3XL (28")

Plus: 2XL - 3XL (30.5") Tall: XS - 3XL (33")

Tapered pants with EON logo branded waistband. Dyed-to-match drawstring. Two front slant pockets. Single inner utility pocket. Two back patch pockets. Single cargo pocket with scissor pocket. Side vents.

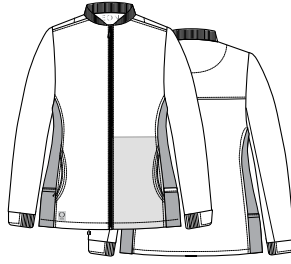


## 8708 SPORTY MESH PANEL JACKET

Reg: XXS - XL

Plus: 2XL - 3XL Length (M): 27"

Round neck knit rib collar jacket.  
Mesh side panels. Dyed-to-match zipper.  
Half rib trim cuff. Two curved front pockets.  
Inner utility pocket. Side pocket with zipper and side  
pocket with twill tape. Back yoke with self-facing fabric.

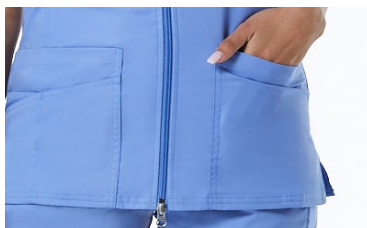
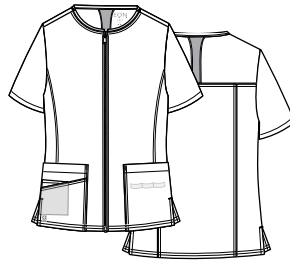


## 8728 BACK MESH PANEL SHORT SLEEVE ZIP JACKET

Reg: XXS - XL

Plus: 2XL - 3XL Length (M): 28.25"

Short sleeve round neck zipper jacket. Three patch  
pockets with single hidden pocket. Utility tape in the  
left pocket. Dyed-to-match zipper. Back yoke with  
double needle stitching and mesh panel with detailing  
inside. Princess seams at the front. Side vents.





## 5208 MEN'S SINGLE CHEST POCKET V-NECK TOP

Reg: XXS - XL

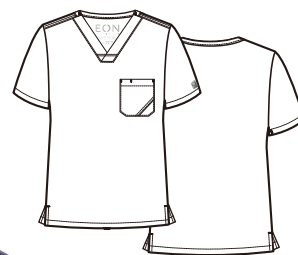
Plus: 2XL - 3XL

Length (M): 30.75"

Men's v-neck top.

Single chest pocket with a pen slot.

Decorative stitching on pocket. Side vents.



CBL RYL TNY PEW BLK



## 5308 MEN'S MESH PANEL 3-POCKET V-NECK TOP

Reg: XXS - XL

Plus: 2XL - 3XL

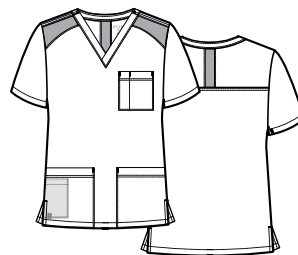
Length (M): 30.75"

V-neck top. Two patch pockets with single

hidden pocket. Single chest pocket with a pen slot.

Curved mesh panel on the shoulders.

Back yoke with mesh panel. Side vents.



CBL RYL TNY CRB HTR WIN KHI PEW CHR BLK



## 8308 MEN'S HALF ELASTIC 8-POCKET CARGO PANT

Reg: XXS - XL (31")

Short: XXS - 3XL (28.5")

Plus: 2XL - 3XL (31")

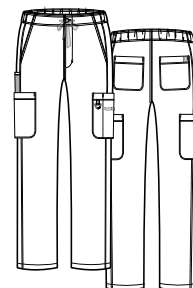
Tall: XS - 3XL (33.5")

Half elastic waistband tapered pant.

Dyed-to-match drawstring. Two front slant pockets.

Two cargo pockets. Mesh pocket with twill tape.

Pen slot pocket with triangle ring. Two back patch pockets.



TOP SELLER

90% Polyester 10% Lycra

LYCRA

# Bestee

What scrub outfit is complete without an underscrub?  
We call it the Bestee - worn under any top to fit any style.  
You'll want to wear it anywhere, everyday.

- Ultra-stretch Lycra fabric • Soft and comfortable
- Available in a wide range of colors • Form-fitting to keep you warm

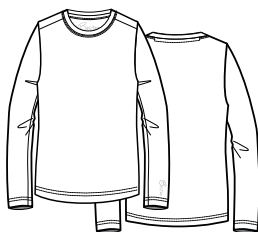
## 6909 BESTEE LONG SLEEVE UNDERSCRUB TEE

Reg: XXS - XL  
Plus: 2XL - 3XL Length (M): 26.75"

Round neck long sleeve tee.

Made with Lycra® elastic performance fabric.

Heat transferred patch at sleeve hem.



90% Polyester 10% Lycra



CBL RYL NVY ALM AQU RTL LCO PPC UVI WIN PEW BLK WHT RED CRB MSV HGR  
NEW NEW NEW NEW



The Lycra fiber blend enhances color fastness,  
long lasting fit and shape retention, and resists  
damage caused by perspiration and UV rays.

BESTEE

TOP SELLER

COOLMAX®

ANTIMICROBIAL

# KNITS

Feel amazing in these super soft tops.

- COOLMAX® breathable fabric technology
- Moisture-wicking fibers to help reduce bacterial growth
- Soft, comfortable material keeps you warm

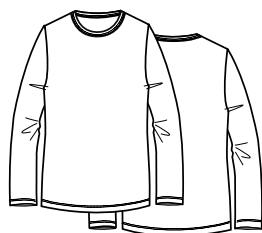
## 6709 UNDERCOOL LONG SLEEVE UNDERSCRUB TEE

Reg: XS - XL

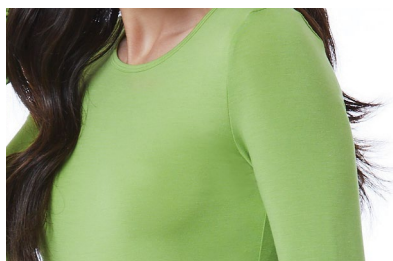
Plus: 2XL - 3XL Length (M): 26.75"

Round neck long sleeve tee.

COOLMAX® moisture-wicking performance fabric.



60% Rayon 35% Polyester 5% Spandex



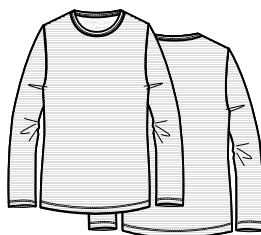
## 6809 UNDERCARE LONG SLEEVE UNDERSCRUB TEE

Reg: XS - XL

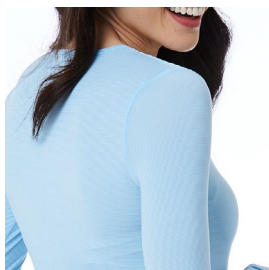
Plus: 2XL - 3XL Length (M): 26.75"

Round neck long sleeve underscrub striped tee.

Antimicrobial eliminates germs and odors.



80% Nylon 20% Spandex



KNITS

# pure

S o f t

96% Polyester 4% Spandex

Take on your busy day with this cozy collection.

- Soft, velvety fabric
- Durable and flexible
- Professional look

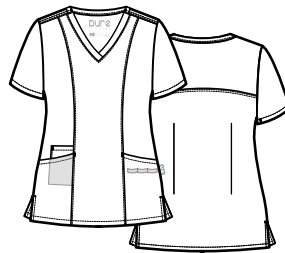
**P** High Performance

## 1901 3-PANEL V-NECK TOP

Reg: XXS - XL

Plus: 2XL - 3XL Length (M): 27.75"

Curved v-neck top. Two front slant pockets. Single inner utility pocket. Utility tape in the left pocket. Princess seams at the front. Curved back yoke with double needle stitching. Back darts. Side vents.

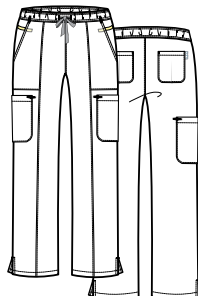


## 7901 REFLECTIVE CARGO PANT

Reg: XXS - XL (30.5") Petite: XS - 3XL (28")

Plus: 2XL - 3XL (30.5") Tall: XS - 2XL (33")

Full elastic waistband. Dyed-to-match drawstring. Belt loop ring. Two front slant patch pockets, inner utility pocket, zipper pocket, welt cargo pocket. Two back welt pockets. Side vents.



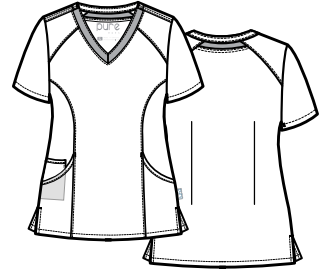


## 1902 MODERN V-NECK TOP

Reg: XXS - XL

Plus: 2XL - 3XL Length (M): 27.75"

Curved v-neck top. Front and back shoulder panels. Curved back mesh panel below neckband. Two front curved pockets. Single inner utility pocket. Side vents.



96% Polyester 4% Spandex

P High Performance

PURE SOFT



## 7902 ADJUSTABLE FLARE YOGA PANT

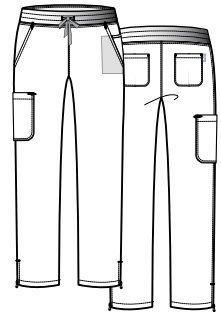
Reg: XXS - XL (30.5")

Plus: 2XL - 3XL (30.5")

Petite: XS - 3XL (28")

Tall: XS - 2XL (33")

Tapered pants with yoga style waistband. Dyed-to-match drawstring. Two front slant pockets. Single inner utility pocket. Single cargo pocket. Two back patch pockets. Adjustable zipper at hemlines.



# PrimaFlex

**52% Cotton 35% Polyester**  
**13% Elastereil-P**



## **P** High Performance

When you are on-the-go and need reliability.

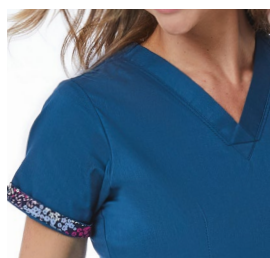
- Enhanced color brightness
- Solid color option or with inner beauty print at sleeve cuff and back side of neckline

### **1722** INNER BEAUTY V-NECK TOP

Reg: XS - XL

Plus: 2XL - 3XL      Length (M): 27.75"

Two front patch pockets. Two lower patch pockets on right side. Logo loop pen pocket. Two-way fold-over sleeve. Dyed-to-match button. Inner contrast print at sleeve cuff and neck facing. Front and back darts. Side vents.



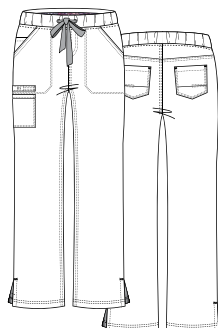
▲ = Contrast Color

### **7322** INNER BEAUTY STRAIGHT LEG PANT

Reg: XS - XL (30.5")      Petite: XS - 3XL (28")

Plus: 2XL - 3XL (30.5")

Full elastic waistband straight leg pant. Two front slant pockets. Single inner utility pocket. Two back patch pockets. Logo loop pen pocket. Inner contrast print at waistband and front slant pockets. Dyed-to-match drawstring with grommet. Side vents.





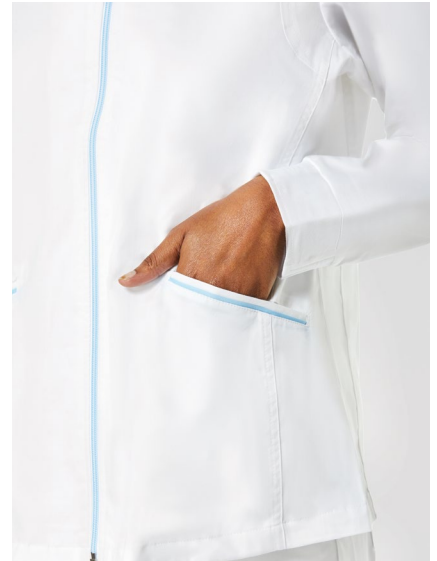
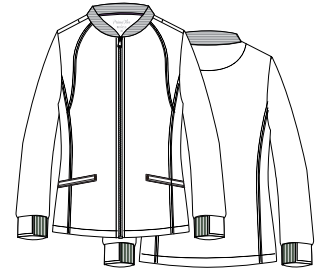
## 8702 WARM-UP ZIP JACKET

Reg: XS - XL

Plus: 2XL

Length (M): 27"

Round neck knit rib collar jacket. Two-tone zipper. Two slant welt pockets with contrast piping. Half rib trim cuff. Contrasting detail at back neck. Decorative lines with double needle stitching.



52% Cotton 35% Polyester 13% Elastrell-P



P High Performance

PRIMAFLEX

Flexibility  
&  
High  
Performance

TOP  
PRIMAFLEX: 8702-TNY

BOTTOM  
PRIMAFLEX: 7322-TNY



TOP  
PRIMAFLEX: 1722-CBL  
PRIMAFLEX: 8702-WHT

BOTTOM  
PRIMAFLEX: 7322-CBL

# blossom

55% Cotton 42% Polyester  
3% Spandex

Create a classic look with this collection.

## C High Comfort Stretch

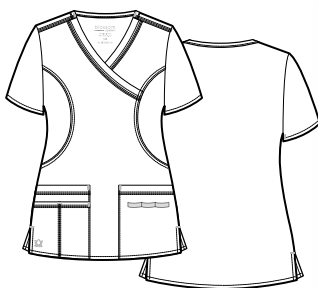
- Breathable stretch fabric
- Comfortable fit
- Plenty of pockets

### 1102 MOCK WRAP TOP

Reg: XS - XL

Plus: 2XL - 5XL Length (M): 27.5"

Two front patch pockets. Two lower pockets on the right side. Utility tape in the left pocket. Contrast bartacks. Princess seams. Triple needle stitching. Side vents.

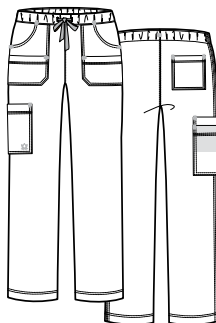


### 9202 UTILITY CARGO PANT

Reg: XS - XL (30.5") Petite: XS - 3XL (28")

Plus: 2XL - 5XL (30.5") Tall: XS - 3XL (33.5")

Boot-cut leg with full elastic waistband. Two front multi-pockets. Back patch pocket. Cargo pocket and inner utility pocket. Contrast drawstring and bartacks. Triple needle stitching.



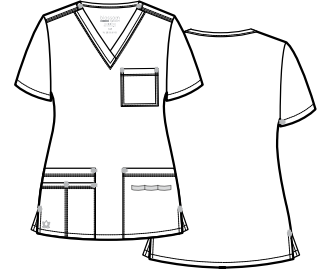


## 1202 3-POCKET V-NECK TOP

Reg: XS - XL

Plus: 2XL - 3XL Length (M): 26.5"

Two front patch pockets. Two lower pockets with double utility pockets on the right side. Utility tape in the left pocket. Single chest pocket with double stitching. Contrast bartacks. Side vents.



▲ = Contrast Color

55% Cotton 42% Polyester 3% Spandex

High Comfort Stretch

BLOSSOM



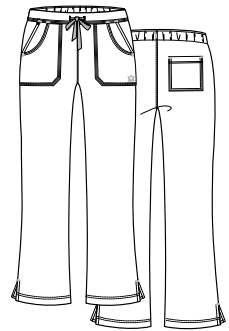
## 9102 MULTI-POCKET FLARE PANT

Reg: XS - XL (31")

Plus: 2XL (31")

Petite: XS - 2XL (28")

Flare leg pant with flat front and elastic back waistband. Four front pockets and single back patch pocket. Contrast drawstring and bartacks. Triple needle stitching. Side vents.



▲ = Contrast Color



**RED PANDA**

**D High Durability**

**65% Polyester 35% Cotton**

Love the traditional style with incredible upgrades.

- Super soft fabric
- Long-lasting and durable
- Lightweight feel
- Professional look



TOP  
RED PANDA: 1706-TEL

BOTTOM  
RED PANDA: 9706-TEL



TOP  
RED PANDA: 1706-TRQ

BOTTOM  
RED PANDA: 9706-TRQ

*Classic*  
**Meets**  
*Adaptive*



## 1716 V-NECK TWO POCKET TOP

Reg: XXS - XL

Plus: 2XL - 5XL Length (M): 27.75"

V-neck top. Two front patch pockets.  
Double needle stitching at shoulder and pocket.  
Utility tape in the left pocket.  
Side vents.



65% Polyester 35% Cotton D High Durability



## 9716 HALF ELASTIC PANT

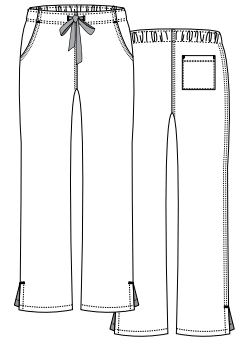
Reg: XXS - XL (30.5")

Plus: 2XL - 5XL (30.5")

Petite: XS - 3XL (28")

Tall: XS - 3XL (33")

Straight leg pant. Half elastic waistband with dyed-to-match drawstring. Two front curved pockets. Single back patch pocket. Side vents.



RED PANDA

**1726 CURVED MOCK WRAP TOP**

Reg: XXS - XL

Plus: 2XL - 5XL Length (M): 27.75"

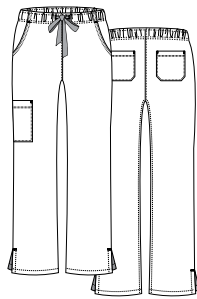
Curved mock wrap top. Front yoke with double needle stitching. Two front patch pockets. Single inner patch pocket on the right side. Utility tape in the left pocket. Side vents.

**9726 FULL ELASTIC WAISTBAND CARGO PANT**

Reg: XXS - XL (30.5") Petite: XXS - 3XL (28")

Plus: 2XL - 5XL (30.5") Tall: XS - 3XL (33")

Straight leg pant.  
Full elastic waistband with dyed-to-match drawstring.  
Two front curved pockets. Single cargo pocket.  
Two back patch pockets. Side vents.





## 1706 UNISEX V-NECK TOP

Reg: XXS - XL

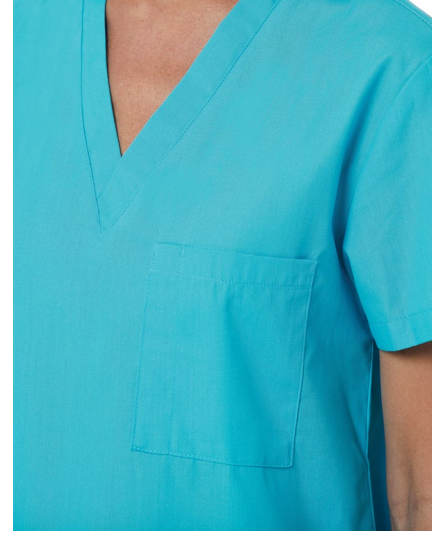
Plus: 2XL - 5XL Length (M): 27.75"

*Unisex v-neck top.*

*Single chest pocket with a pen slot.*

*Decorative stitching.*

*Side vents.*



65% Polyester 35% Cotton  High Durability

RED PANDA



## 9706 UNISEX BASIC PANT

Reg: XXS - XL (30.75")

Plus: 2XL - 5XL (30.75")

Petite: XXS - 2XL (28.25")

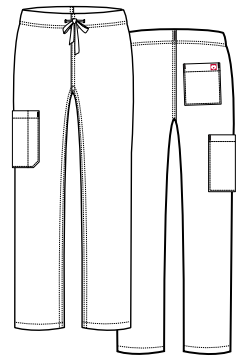
Tall: XS - XL (33.25")

*Unisex straight leg pant.*

*Single cargo pocket with a pen slot.*

*Dyed-to-match drawstring.*

*Single back patch pocket.*

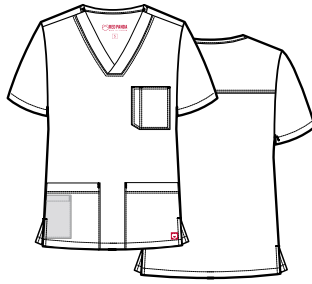


**5206 MEN'S 3-POCKET V-NECK TOP**

Reg: XS - XL

Plus: 2XL - 5XL Length (M): 30.75"

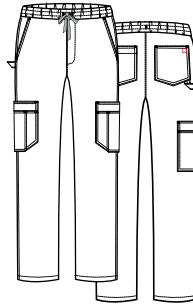
V-neck top. Two front patch pockets.  
Single hidden pocket. Single chest pocket  
with a pen slot. Back yoke with double  
needle stitching. Side vents.

**8206 MEN'S FULL ELASTIC 10-POCKET CARGO PANT**

Reg: XS - XL (31") Short: XS - 4XL (28.5")

Plus: 2XL - 5XL (31") Tall: XS - 3XL (33.5")

Tapered pants with triple-stitched full elastic waistband  
and dyed-to-match drawstring. Two front slant pockets.  
Two cargo pockets with pen slots.  
Two back patch pockets with single large utility loop.



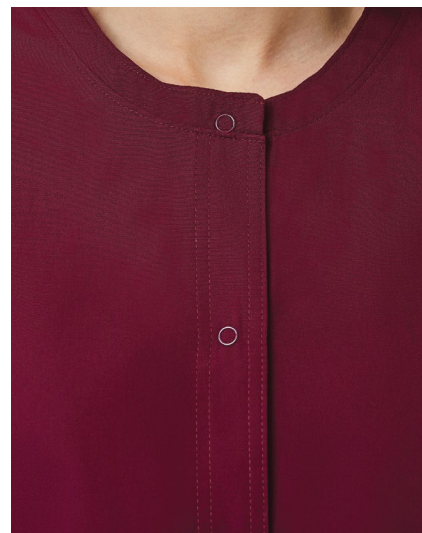
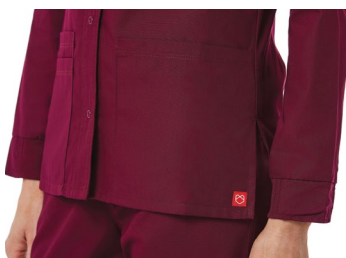


## 8706 WOMEN'S WARM-UP JACKET

Reg: XS - XL

Plus: 2XL - 5XL Length (M): 28.5"

Round neck long sleeve jacket with dyed-to-match snap front. Half rib trim cuff. Two front patch pockets. Two lower patch pockets. Utility tape in the left pocket. Double pocket on the right side. Side vents.



65% Polyester 35% Cotton D High Durability

RED PANDA



## 8716 UNISEX SNAP JACKET

Reg: XXS - XL (29.25")

Plus: 2XL - 5XL (29.25")

Round neck long sleeve jacket with dyed-to-match ring-snap front. Full rib trim cuff. Two front slant patch pockets. Single inner utility pocket. Utility tape in the left pocket. Side vents.



# CORE

**65% Polyester 35% Cotton**

Maximize function everyday in comfort.

- Superior engineered poplin fabric
- Comfortable and durable
- Great value

## **D** High Durability

### **1006 UNISEX V-NECK TOP**

Reg: XXS - XL

Plus: 2XL - 5XL Length (M): 28.75"

*Unisex v-neck top.*

*Single chest pocket with a pen slot.*

*Double stitching at shoulder and pocket.*

*Side vents.*



### **9006 UNISEX SEAMLESS PANT**

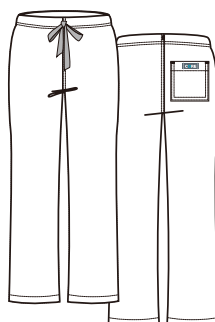
Reg: XXS - XL (31") Petite: XS - 3XL (28")

Plus: 2XL - 5XL (31") Tall: XS - 3XL (33")

*Unisex seamless straight leg with drawstring waistband.*

*Single back pocket with double stitching and*

*dyed-to-match drawstring.*





## 1016 CLASSIC V-NECK TOP

Reg: XXS - XL

Plus: 2XL - 5XL Length (M): 27.75"

V-neck top. Two front patch pockets.  
Single inner utility pocket on the right side.  
Utility tape in the left pocket. Double stitching  
at shoulder and pocket. Side vents.



65% Polyester 35% Cotton

**D** High Durability

CORE



## 9016 FULL ELASTIC BAND CARGO PANT

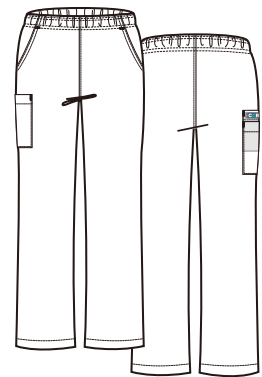
Reg: XXS - XL (31")

Plus: 2XL - 5XL (31")

Petite: XS - 3XL (28")

Tall: XS - 3XL (33")

Straight leg with full elastic waistband.  
Two front slant pockets.  
Single cargo pocket and inner utility pocket.



## 1026 CONTRAST MOCK WRAP TOP

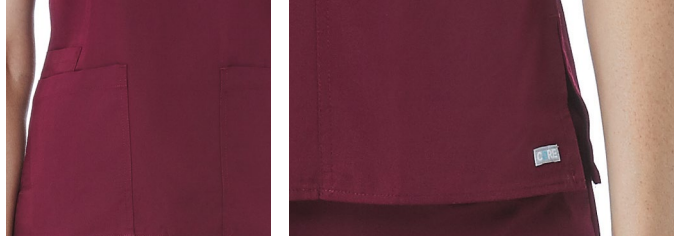
Reg: XXS - XL

Plus: 2XL - 5XL Length (M): 26.25"

Mock wrap top. Contrast neck binding.

Two front patch pockets. Single inner utility pocket on the right side. Utility tape in the left pocket.

Side vents.



## 9026 CLASSIC FLARE PANT

Reg: XXS - XL (31") Petite: XS - 3XL (28")

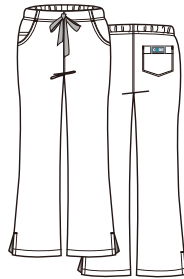
Plus: 2XL - 5XL (31") Tall: XS - 3XL (33")

Flare leg pant with flat front, elastic back waistband.

Dyed-to-match drawstring. Two front curved pockets.

Single inner utility pocket. Single back patch pocket.

Side vents.



## 9626 UTILITY CARGO PANT

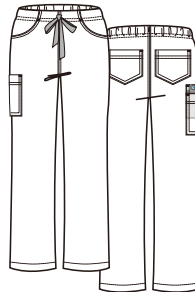
Reg: XXS - XL (31") Petite: XS - 3XL (28")

Plus: 2XL - 5XL (31") Tall: XS - 3XL (33")

Straight leg pant, flat front, elastic back waistband.

Dyed-to-match drawstring. Two front curved pockets.

Two back patch pockets. Single cargo pocket with inner utility pocket.



High Durability

65% Polyester 35% Cotton

CORE

# BLAZE

## 100% Polyester Bonded Fleece

We created the perfect jacket for a cold day.

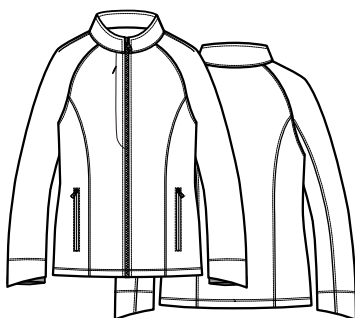
- Super soft, insulated interior
- Invisible inseam pocket
- Highly breathable fabric and lightweight
- Keeps you warm and comfy

### 3812 WOMEN'S WARM-UP BONDED FLEECE JACKET

Reg: XS - XL

Plus: 2XL - 3XL      Length (M): 27"

*Bonded fleece jacket with raglan style sleeve. Two front zipper pockets. Chest zipper pocket. Inner mesh pocket. Asymmetric sleeve hemline with internal knit fabric. Shoulder darts. Front and back vertical seams.*

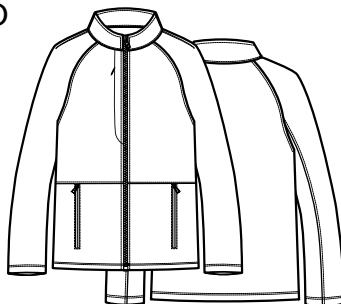


### 3814 MEN'S WARM-UP BONDED FLEECE JACKET

Reg: S - XL

Plus: 2XL - 3XL      Length (M): 28.5"

*Bonded fleece jacket with raglan style sleeve. Two front zipper pockets. Chest zipper pocket. Shoulder darts and waist seam.*



BLK



BLAZE

## 8801 3/4 SLEEVE ZIP LAB JACKET

Reg: XXS - XL

Plus: 2XL - 4XL Length (M): 28"

Fashion collar. Two way front zipper. Side vents.  
Front princess line. Two front pockets with inner pockets.  
3/4 sleeve with side vent. Back darts with buttoned waist belt.



## 8802 HALF SLEEVE CONTRAST TRIM JACKET

Reg: XXS - XL

Plus: 2XL - 4XL Length (M): 29"

Fitted collar. Two way front zipper. Side vents.  
Front and back princess line. Two front patch pockets.  
Half sleeve with side vent. Waist belts on side panel.  
Fancy buttons on sleeve and waist belt.



## 8803 3/4 SLEEVE LAB JACKET

Reg: XXS - XL

Plus: 2XL - 3XL Length (M): 29"

Rounded neckline and 3/4 sleeve with side vent.  
Two way front zipper. Two front curved pockets with utility pocket. Back waist belt. Side vents.



# LAB COATS

**65% Polyester 35% Cotton**

A LIGHTER coat to suit you.

**D High Durability**

- Modern style
- Lightweight
- Large patch pockets for mini tablet
- Durable with a slightly thicker denim feel

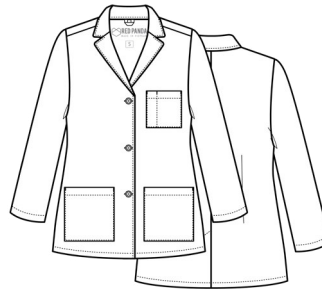
## 7116 RED PANDA - WOMEN'S CONSULTATION LAB COAT

Reg: XS - XL

Plus: 2XL - 3XL

Length (M): 29"

*Notched collar consultation coat with dyed-to-match button front. Chest pocket with a pen slot. Two large patch pockets for mini tablet. Back darts and center vent.*



WHT

## 7126 RED PANDA - WOMEN'S 3/4 SLEEVE LAB COAT

Reg: XS - XL

Plus: 2XL - 3XL

Length (M): 29"

*Notched collar consultation coat with dyed-to-match button front. Two large patch pockets for mini tablet. Back waist belt with darts. Sleeve cuffs with back vents. Center back vent.*



## 7156 RED PANDA - WOMEN'S LONG LAB COAT

Reg: XS - XL

Plus: 2XL - 3XL

Length (M): 37.5"

Notched collar lab coat with dyed-to-match button front. Two large patch pockets for mini tablet. Chest pocket with a pen slot. Back waist belt with dyed-to-match buttons. Back yoke. Side access slits. Center and side vents.



WHT



## 7216 RED PANDA - MEN'S CONSULTATION LAB COAT

Reg: XS - XL

Plus: 2XL - 5XL

Length (M): 30.5"

Notched collar consultation coat with dyed-to-match button front. Chest pocket with a pen slot. Two large patch pockets for mini tablet. Back yoke. Center back vent.



WHT



## 7256 RED PANDA - MEN'S LONG LAB COAT

Reg: XS - XL

Plus: 2XL - 5XL

Length (M): 42.5"

Notched collar lab coat with dyed-to-match button front. Two large patch pockets for mini tablet. Chest pocket with a pen slot. Back waist belt with dyed-to-match buttons. Back yoke. Side access slits. Center and side vents.



WHT



RED PANDA - LAB COATS

65% Polyester

35% Cotton

D High Durability



## 7151 CORE - WOMEN'S CONSULTATION LAB COAT

Reg: XS - XL

Plus: 2XL - 3XL Length (M): 30.5"

*Notched collar lab coat with dyed-to-match button front. Chest pocket with a pen slot. Two front pockets. Single inner utility pocket. Inner utility tape in the left pocket. Back waist belt with dyed-to-match buttons.*



65% Polyester 35% Cotton

**D** High Durability

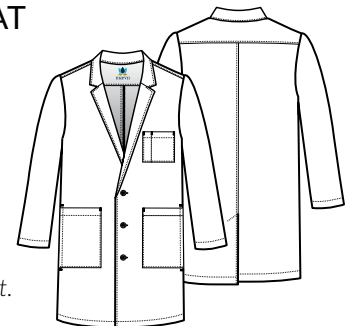


## 7551 CORE - UNISEX LAB COAT

Reg: XS - XL

Plus: 2XL - 5XL Length (M): 35.5"

*Unisex notched collar lab coat with dyed-to-match button front. Chest pocket with a pen slot. Two front patch pockets and inner patch pocket. Side access slits. Back center vent.*



CORE - LAB COATS

# Prints

**92% Polyester 8% Spandex**

Brighten your day with these creative prints.

- Fun designs with personality
- Beautiful array of colors
- Soft and wrinkle resistant
- Professional style

## 1767 V-NECK PRINT TOP

Reg: XS - XL

Plus: 2XL - 3XL

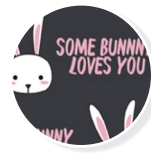
Plus: 4XL - 5XL - Selected Items

92% Polyester 8% Spandex

### NEW 2021 SPRING



**EEH**  
Easter Egg Hunt



**SBU**  
Some Bunny Loves You



**BEM**  
Bee Mine



**PUG**  
For the Love of Pug



**MOB**  
Monkey Business



**SSF**  
Sunset Flowers



**PAW**  
Paw-some  
5XL



**HGO**  
Hello Gorgeous



**GAS**  
Garden Sketches



**BLD**  
Blossom Dreams  
5XL



**FSS**  
Forever Seashells



**ELP**  
Ellipse  
5XL



**EDG**  
Edgeline  
5XL

### 2020 SPRING



**BCB** Blooming Cherry Blossom



**CUC** Cup O' Cat



**SPB** Spring Bouquet



**BUC** Bunny Cakes



**CIL** Cat-In-Love



**COD** Coffee Date

2020 SPRING



DRC

Doctor Cat



FAL

Fabullama



SBR

Sir Brush-A-Lot



SPO

Spaced Out



TTD

Tic Tac Donut

2020 SUMMER



DOW

Donut Worry, Be Happy



AVO

Avocat



BEN

Beary Nurse



TRD

Tropical Daze



SST

Star Spangled Treats



HIR

Hibiscus Roar



BAT

Baby Trunks

1767 V-NECK PRINT TOP 92% Polyester 8% Spandex

PRINTS

2020 SUMMER



SAD

Shark A Doo



NUB

Nurse Beat



ONM

One In A Melon

2020 FALL



PKL

Pink Ladies



DCT

Days of the Cats



ACM

Avo-Cat-Mas



UPS

Uni-Pigs in Space



AWU

All Wrapped Up



FLY

Florever Yours



PPD

Playful Puddles



TAL

Thanks-A-Latte



HLD

Happy-Llama-Days



SHH

Slow Ho Ho



SWD

Sweet Dreams



OFF

Out of Planet



ESF

Easter Friends

2019 SPRING

## 2019 SUMMER



**SUF** Summer Flowers



**DIL** Dino Land



**FFN** Field of Flowers



**JUP** Jungle Party



**TOP** Toucan Paradise



**LIS** Liberty and Sam



## 2019 FALL



**COL** Coffee Love



**COP** Costume Party



**FON** Foxy Night



**MFT** Mermaids and Fairy Tales



**NIG** Night Garden



**SPT** Spooky Treats

## 2019 WINTER



**CMC** Color Me Christmas



**DTD** Dashing Through Donuts



**HCH** Have a Cocoa Holiday



**PIM** Panda in Motion

1767 V-NECK PRINT TOP 92% Polyester 8% Spandex

PRINTS

## 1747 CURVED V-NECK PRINT TOP

Reg: XS - XL  
Plus: 2XL - 3XL

Length (M): 27.25"

96% Polyester 4% Spandex

2020 SPRING



BBQ

Beautiful Bouquet



BMW

Blooming Wings



LVH

Loving Hearts



OTB

Out of the Blue



2020 SUMMER

FPT

Flower Patch



JLV

Jumbo Love



CAB

Cute As A Button



WAH

What A Hoot

PRINTS

2019 SPRING



BBL

Blissful Bloom



CMH

Cross My Heart



DAC

Dots and Circles

2019 WINTER



BHE

Blushing Hearts



BLB

Blooming in Blue



SPO

Spot On



WIB

Wings In Bloom



PDN

Pokie Dot

2018 FALL

1747 CURVED V-NECK PRINT TOP 96% Polyester 4% Spandex

PRINTS

# READYGO

## CLINICAL BACKPACK

A new multi-functional accessory that you can carry like a tote or a backpack. It is the new carry-all for your daily activities.

- A variety of pockets and compartments for storage
- Lightweight and durable
- Easy-to-clean surface
- 100% vegan leather trim
- Detachable backpack straps



### NB003 READYGO CLINICAL BACKPACK

Height: 16" | Width: 12"

Depth: 7.5"

Front Pocket Height: 10"

Side Pocket Height: 7"

Exterior Zipper Pocket: 9" x 11.5"

*Lightweight, durable, water-resistant polyester fabric.*

*Easy-to-clean surface. Built-in padded shoulder straps.*

*Padded tech pocket that holds a 15" laptop.*

*Padded detachable backpack straps can be tucked inside the back slip pocket.*

*Slip and mesh pockets in exterior compartment.*

*Interior has a zipper pocket, a mesh pocket and two elastic pockets.*

*100% vegan leather trim.*



BLACK  
NB003-BLK



HEATHER GREY  
NB003-HGR



NAVY  
NB003-NVY

## NB005 / NB006 READYGO CLINICAL MINI

Height: 13" | Width: 10.5" | Depth: 5.5"

Front Pocket Height: 8"

Side Pocket Height: 7"

Exterior Zipper Pocket: 10" x 8"

*Lightweight, durable, water-resistant polyester fabric.*

*Easy-to-clean surface.*

*Padded backpack straps can be tucked inside the back slip pocket.*

*Large front zipper pocket with extra built-in interior pockets.*

*Interior has a zipper pocket, a mesh pocket and two elastic pockets.*

*100% vegan leather trim.*

*Interior mesh pocket for tech devices: 9.5" x 10"*



GREY  
NB005-GRY



BLACK  
NB006-BLK



BERRY  
NB006-BRY



PINK  
NB006-PNK



## NB007 READYGO MINI BACKPACK

Height: 14" | Width: 10" | Depth: 7"

Front Pocket Height: 6.8" | Side Pocket Height: 6.5"

Tech Pocket: 10" x 7.5" | For devices up to 10" x 14"

*Lightweight, durable, water-resistant polyester fabric.*

*Easy-to-clean surface.*

*Large main zipper compartment for easy and wide access.*

*Large front zipper pocket with extra built-in interior pockets.*

*Two side pockets with velcro closure adjustable pocket size.*

*Interior has a zipper pocket, a mesh pocket and two elastic pockets.*

*Webbing top handle with snap strap for closure.*

*100% vegan leather trim.*

*Interior mesh pocket for tech devices: 8" x 9"*



**POLKA DOT**  
**NB007-BLK**



## NB011 READYGO CLINICAL CLUTCH

Height: 6.75" | Width: 9.5" | Depth: 2.5"

Handle Drop: 1.5"

Crossbody Strap Drop: Long 22.5", Short: 12.5"

*Lightweight, durable, water-resistant polyester fabric.*

*Easy-to-clean surface.*

*Detachable crossbody strap with metal clips.*

*Back zipper pocket.*

*Can be carried as a clutch or crossbody.*

*Wide access.*

*Interior clear plastic slider pocket.*

*Four elastic bands to hold tools.*

*100% vegan leather trim.*



**BLACK**  
**NB011-BLK**



**BERRY**  
**NB011-BRY**



**CHEETAH**  
**NB011-CHT**



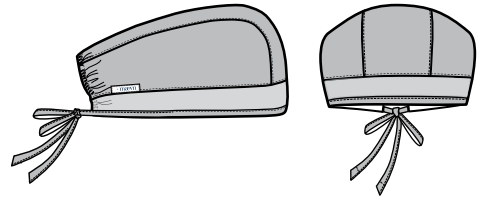
**PINK**  
**NB011-PNK**



## NC010 UNISEX SCRUB CAP

**One Size Fits All.**

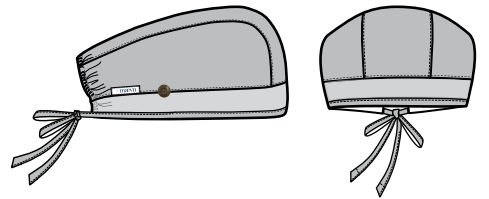
Cotton rich, stretch fabric.  
Ultra soft. Cool feeling. Lightweight.  
Features a terry-cloth sweatband.  
Back elastic. Adjustable, tie-back closure.



## NC015 UNISEX SCRUB CAP WITH BUTTONS

**One Size Fits All.**

Cotton rich, stretch fabric. Ultra soft.  
Cool feeling. Lightweight.  
Features a terry-cloth sweatband.  
Back elastic. Adjustable, tie-back closure.  
Single button on each side.



EcoFlex Fabric



Impulse Fabric



P = Primaflex Fabric



B = Blossom Fabric

## NC020 LADIES BOUFFANT SCRUB CAP

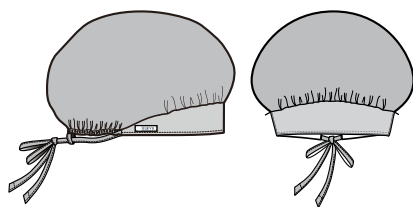
**One Size Fits All.**

Cotton rich, stretch fabric.

Ultra soft. Cool feeling. Lightweight.

Features a terry-cloth sweatband.

Back elastic. Adjustable, tie-back closure.



EcoFlex Fabric



Impulse Fabric



P = Primaflex Fabric



B = Blossom Fabric

## CM010 REUSABLE CLOTH FACE MASK



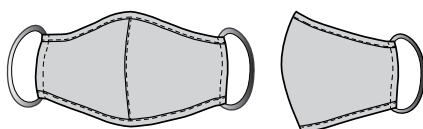
Antimicrobial Treatment

Available Sizes: SM, MD, LG

Two layers of soft, comfortable fabric.

With Agion antimicrobial treatment.

Washable, reusable and eco-friendly.





## MA010 MASK ADAPTOR

### One Size Fits All.

*Easy to use.*

*Washable, stretchy elastic bands.*

*Two buttons to secure mask.*

*Helps prevent mask cutting into the back of ears.*



## MA020-BLK MASK EXTENDER

### One Size Fits All.

*Adjustable cord-lock.*

*Can be worn secure across back of the head as ear saver.*

*Can be worn loose around back of the neck as a mask holder.*

*Comfortable elastic cord.*

*Easy clip plastic clasps.*

*Unisex.*



# P High Performance Collections

EON

59% Polyester 22% Rayon 19% Elastell-P  
MESH: 83% Polyester 17% Spandex

COOLMAX®

LYCRA

UPF<sup>40+</sup>



**1708**

V-NECK  
POCKET TOP

Reg: XXS - XL  
Plus: 2XL - 3XL

Length (M):  
27.75"

**7308**

FULL ELASTIC ZIPPER  
POCKET CARGO PANT

Reg: XXS - XL (30.5")  
Plus: 2XL - 3XL (30.5")  
Petite: XXS - 3XL (28")  
Tall: XS - 3XL (33")

**8708**

SPORTY MESH  
PANEL JACKET

Reg: XXS - XL  
Plus: 2XL - 3XL

Length (M):  
27"



**5308**

MEN'S MESH PANEL  
3-POCKET V-NECK TOP

Reg: XXS - XL  
Plus: 2XL - 3XL

Length (M):  
30.75"

**8308**

MEN'S HALF ELASTIC  
8-POCKET CARGO PANT

Reg: XXS - XL (31")  
Plus: 2XL - 3XL (31")  
Short: XXS - 3XL (28.5")  
Tall: XS - 3XL (33.5")

**5208**

MEN'S SINGLE CHEST  
POCKET V-NECK TOP

Reg: XXS - XL  
Plus: 2XL - 3XL

Length (M):  
30.75"



GROUP SALES

# P High Performance Collections

## MATRIX PRO

74% Polyester 20% Rayon 6% Spandex



**3901** CONTRAST LAYERED  
V-NECK TOP

Reg: XXS - XL Length (M):  
Plus: 2XL - 3XL 27.25"

**6901** CONTRAST YOGA  
WAISTBAND PANT

Reg: XXS - XL (31")  
Plus: 2XL - 3XL (31")  
Petite: XS - 2XL (28.5")  
Tall: S - XL (33.5")



**7091** COMFY WARM-UP  
JACKET

Reg: XS - XL Length (M):  
Plus: 2XL - 3XL 27.25"



**5901** MEN'S CONTRAST  
PIPING V-NECK TOP

Reg: XS - XL Length (M): 29.25"  
Plus: 2XL - 3XL

**8901** MEN'S HALF ELASTIC  
WAISTBAND  
CARGO PANT

Reg: XS - XL (31")  
Plus: 2XL - 3XL (31")  
Short: XS - 2XL (28.5")

GROUP SALES

# C High Comfort Stretch Collections

## MATRIX

65% Polyester 32% Rayon 3% Spandex



### 3500 UNISEX V-NECK TOP

Reg: XS - XL Length (M): 28.75"  
Plus: 2XL - 5XL



### 3501 DOUBLE V-NECK TOP

Reg: XXS - XL Length (M): 27.25"  
Plus: 2XL - 3XL Length (M): 27.25"  
Short: XS - XL Length (M): 25.75"



### 5502 MEN'S 3-POCKET V-NECK TOP

Reg: XS - XL Length (M): 29.75"  
Plus: 2XL - 3XL

### 6500 UNISEX BASIC PANT

Reg: XS - XL (31")  
Plus: 2XL - 5XL (31")  
Short: XS - 2XL (28.5")

### 6501 FULL ELASTIC WAIST CARGO PANT

Reg: XXS - XL (31")  
Plus: 2XL - 3XL (31")  
Petite: XS - 2XL (28.5")  
Tall: SM - XL (33.5")

### 8502 MEN'S HALF ELASTIC WAISTBAND CARGO PANT

Reg: XXS - XL (31")  
Plus: 2XL - 3XL (31")  
Short: XS - 2XL (28.5")

## MATRIX IMPULSE

92% Polyester 8% Spandex



### 7510 WOMEN'S ROUND NECK SNAP JACKET

Reg: XS - XL Length (M): 27.75"  
Plus: 2XL - 3XL



### 4511 WOMEN'S CURVED V-NECK TOP

Reg: XS - XL Length (M): 27.25"  
Plus: 2XL - 3XL



### 8510 FULL ELASTIC WAISTBAND PANT

Reg: XS - XL (30.5")  
Plus: 2XL - 3XL (30.5")  
Petite: XS - 2XL (28")

## C High Comfort Stretch Collections

### BLOSSOM

55% Cotton 42% Polyester 3% Spandex



#### 1102 MOCK WRAP TOP

Reg: XS - XL Length (M):  
Plus: 2XL - 5XL 27.5"

#### 9202 UTILITY CARGO PANT

Reg: XS - XL (30.5")  
Plus: 2XL - 5XL (30.5")  
Petite: XS - 3XL (28")  
Tall: XS - 3XL (33.5")

#### 1202 3-POCKET V-NECK TOP

Reg: XS - XL Length (M):  
Plus: 2XL - 3XL 26.5"

#### 9102 MULTI-POCKET FLARE PANT

Reg: XS - XL (31")  
Plus: 2XL (31")  
Petite: XS - 2XL (28")



## D High Durability Collections

### RED PANDA

65% Polyester 35% Cotton



#### 1716 V-NECK TWO POCKET TOP

Reg: XXS - XL Length (M):  
Plus: 2XL - 5XL 27.75"

#### 9716 HALF ELASTIC PANT

Reg: XXS - XL (30.5") Petite: XS - 3XL (28")  
Plus: 2XL - 5XL (30.5") Tall: XS - 3XL (33")

#### 1726 CURVED MOCK WRAP TOP

Reg: XXS - XL Length (M):  
Plus: 2XL - 5XL 27.75"

#### 9726 FULL ELASTIC WAISTBAND CARGO PANT

Reg: XXS - XL (30.5") Petite: XS - 3XL (28")  
Plus: 2XL - 5XL (30.5") Tall: XS - 3XL (33")



# D High Durability Collections

**RED PANDA**

65% Polyester 35% Cotton



## 8716 UNISEX SNAP JACKET

Reg: XXS - XL (29.25")  
Plus: 2XL - 5XL (29.25")

## 1706 UNISEX V-NECK TOP

Reg: XXS - XL Length (M):  
Plus: 2XL - 5XL 27.75"

## 9706 UNISEX BASIC PANT

Reg: XXS - XL (30.75")  
Plus: 2XL - 5XL (30.75")  
Petite: XXS - 2XL (28.25")  
Tall: XS - XL (33.25")



## 5206 MEN'S 3-POCKET V-NECK TOP

Reg: XS - XL Length (M):  
Plus: 2XL - 5XL 30.75"

## 8206 MEN'S FULL ELASTIC 10-POCKET CARGO PANT

Reg: XS - XL (31")  
Plus: 2XL - 5XL (31")  
Short: XS - 4XL (28.5")  
Tall: XS - 3XL (33.5")

## 8706 WOMEN'S WARM-UP JACKET

Reg: XS - XL Length (M):  
Plus: 2XL - 5XL 28.5"



GROUP SALES

# D High Durability Collections

## CORE

65% Polyester 35% Cotton



### 1006

UNISEX  
V-NECK TOP

Reg: XXS - XL  
Plus: 2XL - 5XL

Length (M):  
28.75"

### 9006

UNISEX  
SEAMLESS PANT

Reg: XXS - XL (31")  
Plus: 2XL - 5XL (31")  
Petite: XS - 3XL (28")  
Tall: XS - 3XL (33")

### 1016

CLASSIC  
V-NECK TOP

Reg: XXS - XL  
Plus: 2XL - 5XL

Length (M):  
27.75"

### 9016

FULL ELASTIC BAND  
CARGO PANT

Reg: XXS - XL (31")  
Plus: 2XL - 5XL (31")  
Petite: XS - 3XL (28")  
Tall: XS - 3XL (33")



### 1026

CONTRAST  
MOCK WRAP TOP

Reg: XXS - XL  
Plus: 2XL - 5XL

Length (M):  
26.25"

### 9026

CLASSIC  
FLARE PANT

Reg: XXS - XL (31")  
Plus: 2XL - 5XL (31")  
Petite: XS - 3XL (28")  
Tall: XS - 3XL (33")

### 9626

UTILITY  
CARGO PANT

Reg: XXS - XL (31")  
Plus: 2XL - 5XL (31")  
Petite: XS - 3XL (28")  
Tall: XS - 3XL (33")



GROUP SALES

# COLOR CODES

▲ = Contrast Color

 AGR - Apple Green	 HGR - Heather Grey	 PNV - Pure Navy
 ALM - Acid Lime	 HNV - Heather Navy	 PPC - Pink Peacock
 APL - Apple	 HPK - Hot Pink	 PPK - Passion Pink
 AQU - Aquamarine	 HTR - Hunter Green	 PPL - Purple
 ARB - Aruba Blue	 IBL - Imperial Blue	 RBR - Raspberry Rose
 AZL - Azure	 IDG - Indigo Blue	 RED - Red
 BEM- Bee Mine	 IFB - Infinite Blue	 RNV - Real Navy
 BKM - Black with Pewter	 KHI - Khaki	 RPK - Rose Pink
 BLK - Black	 LBL - Lake Blue	 RPW - Real Pewter
 BLP - Blush Pink	 LCO - Living Coral	 RSB - Raspberry
 BPK - Blush Pink	 LGN - Lush Green	 RTL - Real Teal
 CBL - Ceil Blue	 LIM - Lime	 RYL - Royal Blue
 CHC - Chocolate	 LVR - Lavender	 SBP - Strawberry Pink
 CHR - Charcoal	 MBL - Malibu Blue (Core)	 SBU - Some Bunny Loves You
 CPK - Candy Pink	 MBL - Maui Blue (EON)	 SCB - Scuba Blue
 CRB - Caribbean Blue	 MNT - Mint	 SGN - Surgical Green/Sea Green
 CRM - Crimson	 MOB - Monkey Business	 SKY - Sky Blue
 CRD - Cherry Red	 MSV - Metallic Silver	 TBL - Teal Blue
 CYB - Cyan Blue	 NRV - Navy	 TEL - Teal
 DHA - Dahlia	 NYM - Navy with Ceil Blue	 TNY - True Navy
 DCR - Deep Coral	 OLV - Olive	 TPL - True Purple
 EGP - Eggplant	 ORD - Orchid	 TRQ - Turquoise
 FSM - Fresh Salmon	 PAW - Paw-some	 UVI - Ultra Violet
 GBL - Galaxy Blue	 PCB - Pacific Blue	 WHT - White
 GRP - Grape	 PEW - Pewter	 WIN - Wine
 HGO - Hello Gorgeous	 PLM - Plum	 WMN - Watermelon

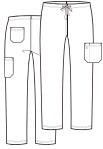
# COLOR GUIDE

## UNISEX STYLES



**3500**

Reg: XS - XL  
Plus: 2XL - 5XL



**6500**

Reg: XS - XL  
Plus: 2XL - 5XL  
Short: XS - 2XL



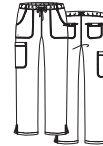
▲ = Contrast Color

## WOMEN'S STYLES



**3501**

Reg: XXS - XL  
Plus: 2XL - 3XL  
Short: XS - XL



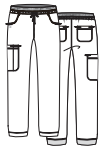
**6501**

Reg: XXS - XL  
Plus: 2XL - 3XL  
Petite: XS - 2XL  
Tall: SM - XL



**3701**

Reg: XXS - XL  
Plus: 2XL - 3XL



**6701**

Reg: XXS - XL  
Plus: 2XL - 3XL  
Petite: XS - 2XL  
Tall: SM - XL



**3502**

Reg: XXS - XL  
Plus: 2XL - 3XL



**7701**

Reg: XS - XL  
Plus: 2XL - 3XL

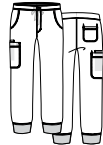


## MEN'S STYLES



**5501**

Reg: XS - XL  
Plus: 2XL - 3XL



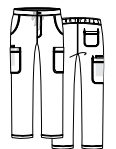
**8501**

Reg: XS - XL  
Plus: 2XL - 3XL  
Short: XS - 2XL



**5502**

Reg: XS - XL  
Plus: 2XL - 3XL



**8502**

Reg: XXS - XL  
Plus: 2XL - 3XL  
Short: XS - 2XL



65% Polyester 32% Rayon 3% Spandex

MATRIX

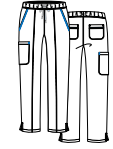
WOMEN'S STYLES

▲ = Contrast Color



**4510**

Reg: XS - XL  
Plus: 2XL - 3XL



**8510**

Reg: XS - XL  
Plus: 2XL - 3XL  
Petite: XS - 2XL



**4520**

Reg: XS - XL  
Plus: 2XL - 3XL



**8520**

Reg: XS - XL  
Plus: 2XL - 3XL  
Petite: XS - 2XL  
Tall: XS - 2XL



**4511**

Reg: XS - XL  
Plus: 2XL - 3XL



**4521**

Reg: XS - XL  
Plus: 2XL - 3XL



**4530**

Reg: XS - XL  
Plus: 2XL - 3XL



**7510**

Reg: XS - XL  
Plus: 2XL - 3XL

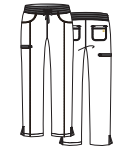


WOMEN'S STYLES



**3901**

Reg: XXS - XL  
Plus: 2XL - 3XL



**6901**

Reg: XXS - XL  
Plus: 2XL - 3XL  
Petite: XS - 2XL  
Tall: S - XL



**7091**

Reg: XS - XL  
Plus: 2XL - 3XL

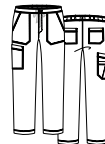


MEN'S STYLES



**5901**

Reg: XS - XL  
Plus: 2XL - 3XL



**8901**

Reg: XS - XL  
Plus: 2XL - 3XL  
Short: XS - 2XL

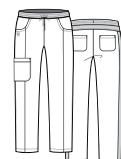


WOMEN'S STYLES



**1768**

Reg: XS - 1XL  
Plus: 2XL - 3XL



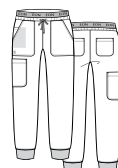
**7368**

Reg: XS - 1XL  
Plus: 2XL - 3XL  
Petite: XS - 2XL



**1778**

Reg: XS - 1XL  
Plus: 2XL - 3XL



**7378**

Reg: XS - 1XL  
Plus: 2XL - 3XL  
Petite: XS - 2XL



74% Polyester 20% Rayon 6% Spandex

59% Polyester 22% Rayon 19% Elastell-P

92% Polyester 8% Spandex

MATRIX IMPULSE

MATRIX PRO

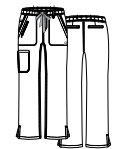
EON SPORT

## WOMEN'S STYLES



**1708**

Reg: XXS - XL  
Plus: 2XL - 3XL



**7308**

Reg: XXS - XL  
Plus: 2XL - 3XL  
Petite: XXS - 3XL  
Tall: XS - 3XL



**1718**

Reg: XXS - XL  
Plus: 2XL - 3XL



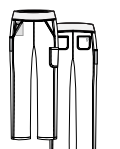
**7318**

Reg: XXS - XL  
Plus: 2XL - 3XL  
Petite: XXS - 3XL  
Tall: XS - 3XL



**1738**

Reg: XXS - XL  
Plus: 2XL - 3XL



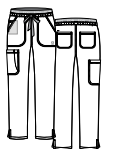
**7338**

Reg: XXS - XL  
Plus: 2XL - 3XL  
Petite: XXS - 3XL  
Tall: XS - 3XL



**1748**

Reg: XXS - XL  
Plus: 2XL - 3XL



**7348**

Reg: XXS - XL  
Plus: 2XL - 3XL  
Petite: XXS - 3XL  
Tall: XS - 3XL



**8708**

Reg: XXS - XL  
Plus: 2XL - 3XL



**8728**

Reg: XXS - XL  
Plus: 2XL - 3XL



## MEN'S STYLES



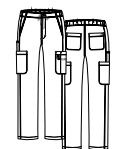
**5208**

Reg: XXS - XL  
Plus: 2XL - 3XL



**5308**

Reg: XXS - XL  
Plus: 2XL - 3XL



**8308**

Reg: XXS - XL  
Plus: 2XL - 3XL  
Short: XXS - 3XL  
Tall: XS - 3XL



59% Polyester 22% Rayon 19% Elastereil-P  
Mesh: 83% Polyester 17% Spandex

COOLMAX

LYCRA

UPF 40+

EON



90% Polyester 10% Lycra

**6909**Reg: XXS - XL  
Plus: 2XL - 3XL

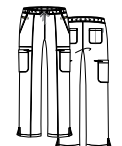
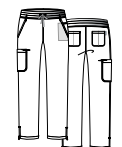
60% Rayon 35% Polyester 5% Spandex

**6709**Reg: XS - XL  
Plus: 2XL - 3XL

80% Nylon 20% Spandex

**6809**Reg: XS - XL  
Plus: 2XL - 3XL

## WOMEN'S STYLES

**1901**Reg: XXS - XL  
Plus: 2XL - 3XL**7901**Reg: XXS - XL  
Plus: 2XL - 3XL  
Petite: XS - 3XL  
Tall: XS - 2XL**1902**Reg: XXS - XL  
Plus: 2XL - 3XL**7902**Reg: XXS - XL  
Plus: 2XL - 3XL  
Petite: XS - 3XL  
Tall: XS - 2XL

## WOMEN'S STYLES

= Contrast Color

**1722**Reg: XS - XL  
Plus: 2XL - 3XL**7322**Reg: XS - XL  
Plus: 2XL - 3XL  
Petite: XS - 3XL**8702**Reg: XS - XL  
Plus: 2XL

96% Polyester 4% Spandex

52% Cotton 35% Polyester 13% Elastell-P

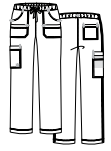
WOMEN'S STYLES

▲ = Contrast Color



**1102**

Reg: XS - XL  
Plus: 2XL - 5XL



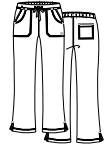
**9202**

Reg: XS - XL  
Plus: 2XL - 5XL  
Petite: XS - 3XL  
Tall: XS - 3XL



**1202**

Reg: XS - XL  
Plus: 2XL - 3XL



**9102**

Reg: XS - XL  
Plus: 2XL  
Petite: XS - 2XL

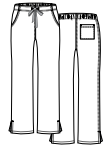


WOMEN'S STYLES



**1716**

Reg: XXS - XL  
Plus: 2XL - 5XL



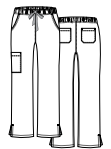
**9716**

Reg: XXS - XL  
Plus: 2XL - 5XL  
Petite: XS - 3XL  
Tall: XS - 3XL



**1726**

Reg: XXS - XL  
Plus: 2XL - 5XL



**9726**

Reg: XXS - XL  
Plus: 2XL - 5XL  
Petite: XS - 3XL  
Tall: XS - 3XL



**8706**

Reg: XS - XL  
Plus: 2XL - 5XL

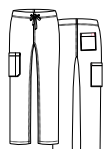


UNISEX STYLES



**1706**

Reg: XXS - XL  
Plus: 2XL - 5XL



**9706**

Reg: XXS - XL  
Plus: 2XL - 5XL  
Petite: XXS - 2XL  
Tall: XS - XL



**8716**

Reg: XXS - XL  
Plus: 2XL - 5XL



55% Cotton 42% Polyester 3% Spandex

BLOSSOM

65% Polyester 35% Cotton

RED PANDA

# RED PANDA

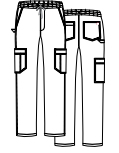
65% Polyester 35% Cotton

## MEN'S STYLES



**5206**

Reg: XS - XL  
Plus: 2XL - 5XL



**8206**

Reg: XS - XL  
Plus: 2XL - 5XL  
Short: XS - 4XL  
Tall: XS - 3XL

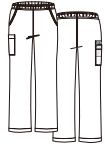


## WOMEN'S STYLES



**1016**

Reg: XXS - XL  
Plus: 2XL - 5XL



**9016**

Reg: XXS - XL  
Plus: 2XL - 5XL  
Petite: XS - 3XL  
Tall: XS - 3XL



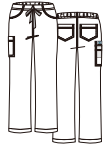
**1026**

Reg: XXS - XL  
Plus: 2XL - 5XL



**9026**

Reg: XXS - XL  
Plus: 2XL - 5XL  
Petite: XS - 3XL  
Tall: XS - 3XL



**9626**

Reg: XXS - XL  
Plus: 2XL - 5XL  
Petite: XS - 3XL  
Tall: XS - 3XL

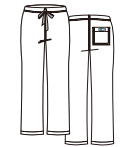


## UNISEX STYLES



**1006**

Reg: XXS - XL  
Plus: 2XL - 5XL



**9006**

Reg: XXS - XL  
Plus: 2XL - 5XL  
Petite: XS - 3XL  
Tall: XS - 3XL



## WOMEN'S STYLES



**3812**

Reg: XS - XL  
Plus: 2XL - 3XL



## MEN'S STYLES



**3814**

Reg: S - XL  
Plus: 2XL - 3XL



▲ = Contrast Color

# CORE

65% Polyester 35% Cotton

# BLAZE

100% Polyester Bonded Fleece

# WOMEN'S STYLES

▲ = Contrast Color



**8801**

Reg: XXS - XL  
Plus: 2XL - 4XL



**8802**

Reg: XXS - XL  
Plus: 2XL - 4XL



**8803**

Reg: XXS - XL  
Plus: 2XL - 3XL



## WOMEN'S STYLES

## MEN'S STYLES

## WOMEN'S

## UNISEX



**7116**

Reg: XS - XL  
Plus: 2XL - 3XL



**7126**

Reg: XS - XL  
Plus: 2XL - 3XL



**7156**

Reg: XS - XL  
Plus: 2XL - 3XL



**7216**

Reg: XS - XL  
Plus: 2XL - 5XL



**7256**

Reg: XS - XL  
Plus: 2XL - 5XL



**7151**

Reg: XS - XL  
Plus: 2XL - 3XL



**7551**

Reg: XS - XL  
Plus: 2XL - 5XL

WHT

## RED PANDA

## CORE



**Black**  
NB003-BLK



**Heather Grey**  
NB003-HGR



**Navy**  
NB003-NVY



**Grey**  
NB005-GRY



**Black**  
NB006-BLK



**Berry**  
NB006-BRY



**Pink**  
NB006-PNK



**Polka Dot**  
NB007-BLK



**Black**  
NB011-BLK



**Berry**  
NB011-BRY

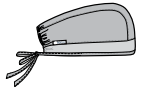


**Cheetah**  
NB011-CHT

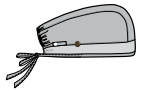


**Pink**  
NB011-PNK

## SCRUB CAPS



**NC010**



**NC015**



EcoFlex Fabric



Impulse Fabric



P = Primaflex Fabric

B = Blossom Fabric



**NC020**



EcoFlex Fabric



Impulse Fabric



P = Primaflex Fabric

B = Blossom Fabric

## FACE MASKS, ADAPTORS, EXTENDER



**CM010**

agion  
Antimicrobial  
Treatment



**MA010**



**MA020-BLK**



96% Polyester 4% Spandex

65% Polyester 35% Cotton

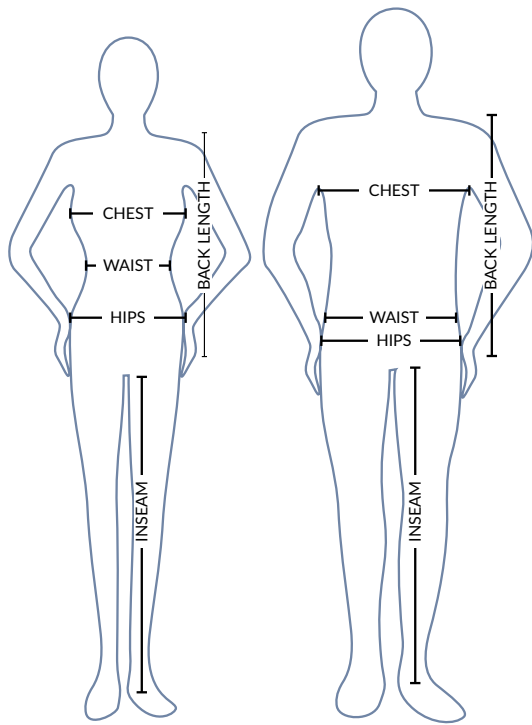
SMART

LAB COATS

READYGO

ACCESSORIES

# SIZING GUIDE



## CHEST

With arms relaxed at your sides, measure the fullest part of the chest.

## WAIST

Measure under the natural waistline, loosely holding the tape measure.

## HIPS

Standing with feet together, measure around the fullest part of the hips.

## INSEAM

Select a pair of your best fitting pants of a similar material. Measure along the inside of the leg, from just below the crotch to the bottom of the pant.

## LENGTH

We recommend petite for women up to 5'2", regular length for up to 5'6", and tall length for 5'7" and above.

WOMEN'S FIT	XXS	XS	S	M	L	XL	2XL	3XL	4XL	5XL
READY-TO-WEAR	0	2-4	6-8	10-12	14-16	18-20	22-24	26-28	30-32	34-36
CHEST/BUST	30-31	32-33	34-35	36-38	39-42	43-46	47-50	51-54	55-58	59-62
WAIST	23-24	25-26	27-28	29-31	32-35	36-39	40-43	44-47	48-51	52-55
HIP	32-33	34-35	36-37	38-40	41-44	45-48	49-52	53-56	57-61	62-66

MEN'S FIT	XXS	XS	S	M	L	XL	2XL	3XL	4XL	5XL
CHEST	31-32	33-35	36-38	39-41	42-45	46-49	50-53	54-57	58-61	62-65
WAIST	22-24	25-27	28-30	31-33	34-37	38-41	42-45	46-49	50-53	54-57
HIP	31-32	33-35	36-38	39-41	42-45	46-49	50-53	54-57	58-61	62-65

UNISEX FIT	XXS	XS	S	M	L	XL	2XL	3XL	4XL	5XL
CHEST/BUST	29-31	32-34	35-37	38-40	41-44	45-48	49-52	53-56	57-60	61-64
WAIST	23-24	25-26	27-29	31-32	33-36	37-40	41-44	45-48	49-52	53-57
HIP	30-32	33-35	36-38	39-41	42-45	46-49	50-53	54-57	58-61	62-65

# PLACING AN ORDER

There are **FIVE WAYS** for our retail partners to place orders:



Call us at **800-993-1841**



Fax us at **972-241-1184**



Send orders via **EDI through The Uniform Solution**



Order online at **<https://b2b.MaevnUniforms.com>**



Email **[orders@MaevnUniforms.com](mailto:orders@MaevnUniforms.com)**

## RETURN AUTHORIZATION

All return requests must be approved with a Return Authorization Number (RA#).

To obtain an RA#, please contact our Customer Service Department at:

Toll Free: 1-800-993-1841 / Fax: 1-972-241-1184      Email: [orders@MaevnUniforms.com](mailto:orders@MaevnUniforms.com)

## RETURN OF MERCHANDISE

RA#'s must be requested within 30 days of receipt. Only items with an RA# may be returned.

Packages without an RA# will be refused.

## DEFECTIVE MERCHANDISE

We stand behind our products. Defective merchandise will always be accepted as long as it is returned within 30 days of receipt. We will either replace those items at no cost or issue full credit.

## SHIPPING DISCREPANCIES

Any items shipped in error must be reported within 7 business days.

We will make sure every item that is returned will be immediately replaced with correct items.

## SHORTAGE CLAIMS

Shortage claims must be reported within 7 business days of receipt.

## SALES TERMS & CONDITIONS

Credit Terms: All new accounts and customer orders are subject to review by Maevn Credit Department.

Merchandise must be paid in US Dollars. Finance charges on past due balances will be imposed.

## MINIMUM ADVERTISED PRICE (MAP)

All accounts must adhere to Maevn's published Minimum Advertised Pricing (MAP).

Any discrepancy or violation could result in suspension or closure of the account.

CUSTOMER SERVICE

# Durable & High Performance



TOP  
EON: 5208-PEW  
BLAZE: 3814-BLK

BOTTOM  
EON: 8308-PEW



13950 Senlac Dr. Suite 300, Farmers Branch, TX 75234

P: 800-993-1841 | F: 972-241-1184 | [orders@maevnuniforms.com](mailto:orders@maevnuniforms.com)



[maevnuniforms](https://www.instagram.com/maevnuniforms)



[MaevnUniforms](https://twitter.com/MaevnUniforms)



[MaevnUniforms](https://www.facebook.com/MaevnUniforms)



[maevnuniforms](https://www.pinterest.com/maevnuniforms)

[MaevnUniforms.com](https://www.MaevnUniforms.com)